

Shropshire to Cheshire Scenic Run

Meeting Point: Alderford Lake

We met at the lakeside cafe at 10:30 on a glorious September morning. After a quick bite to eat we made our way outside for a group photo. We then had 2 minutes silence in honour of the queen.



The run started a little after 11:00 using the route prepared by Ian, which was available for download from the DevaMog website. The instructions were available in map form, and also as detailed steps in a table. I'm useless with maps so I went for the table option, which I downloaded to my mobile phone. We followed the steps as we drove along just incase we were separated from the the group. Fortunately, because of Ian's leading driver skills, we managed to stick with the group and maintain our position in the line. The steps were easy to follow and very accurate, so we felt confident that we could follow the route should we become separated.



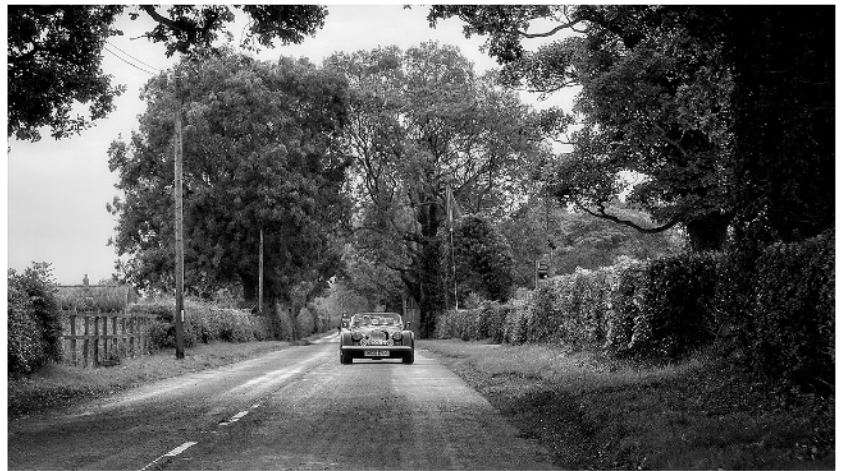


The route took us from Alder Lake, Shropshire, to Blakemore Craft Village in Cheshire.

The roads were of good quality and the scenery along the route was fabulous too.

With tight bends and straight runs it was a great opportunity to experience the Morgan handling and cruising comfort in equal measure.

Thanks to excellent planning, roadworks and speed bumps were avoided making the trip very enjoyable.





Paul Floyd



Paul Floyd





It was great trip and Blakemore Craft Village was an ideal spot for the end of our journey.

Blakemere Village is family-run attraction and home to Cheshire Segway, award-winning Birds of Prey experiences, two craft workshops, plus food and drink outlets.

The village was free to enter and offered free parking.

We had a walk around the wooded area, followed by a coffee in the food courtyard, before making our way home.

Thanks to Ian for arranging the trip and for all his hard work in planning the route.

